

POLONIA RESERVE UPGRADE COMMUNITY CONSULTATION FINDINGS

22 November 2021





CONTENTS

Community Consultation	
Background	3
Response	3
Survey Findings	
Play Experiences	4
Reserve Facilities	5
Survey Summary	
Play Experiences	6
Reserve Facilities	7
Additional Findings	
Community Day Observations	8
Written Comments & Responses	8
Conclusion	
Conclusions	9
Next Steps	9



Birdseye Studios Landscape Architects
347 Unley Road
Malvern SA 5062

birdseyestudios.com.au

contact@birdseyestudios.com.au



CITY OF
Port Adelaide Enfield

COMMUNITY CONSULTATION

BACKGROUND

Birdseye Studios worked with The City of Port Adelaide Enfield to develop a preliminary consultation strategy to inform the design of the Polonia Reserve Upgrade which was undertaken from 11th August - 23rd October 2021.

An opportunities plan with an accompanying short graphic survey were put forward online through Have Your Say PAE. The opportunities plan was illustrated as a shaded diagram overlaid on aerial imagery of the reserve showing suggested locations of paths, a new playspace, turf areas, a detention basin, trees, planting and car parking. The accompanying survey asked members of the public to choose their top three preferred play experiences and reserve facilities to be included within the new reserve design.

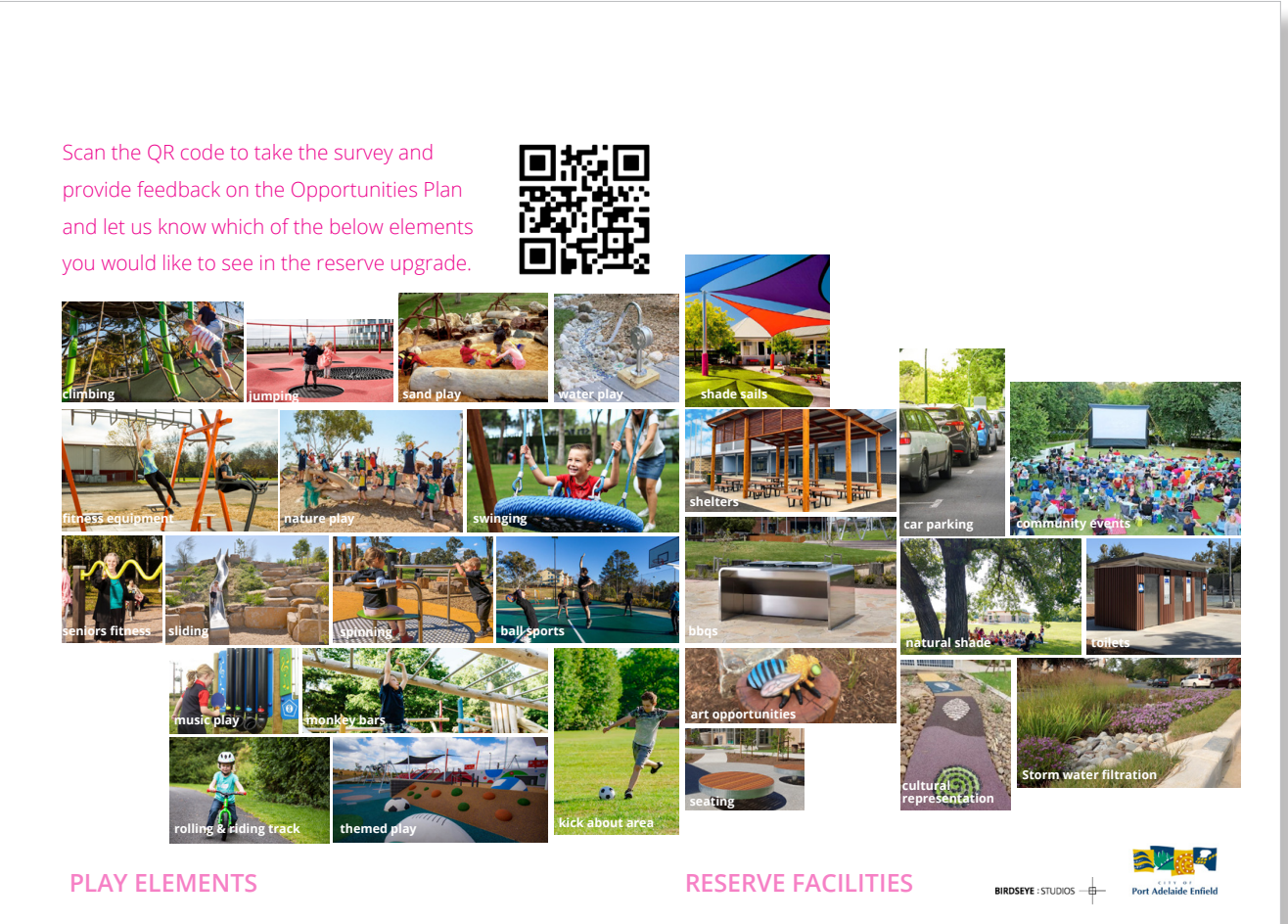
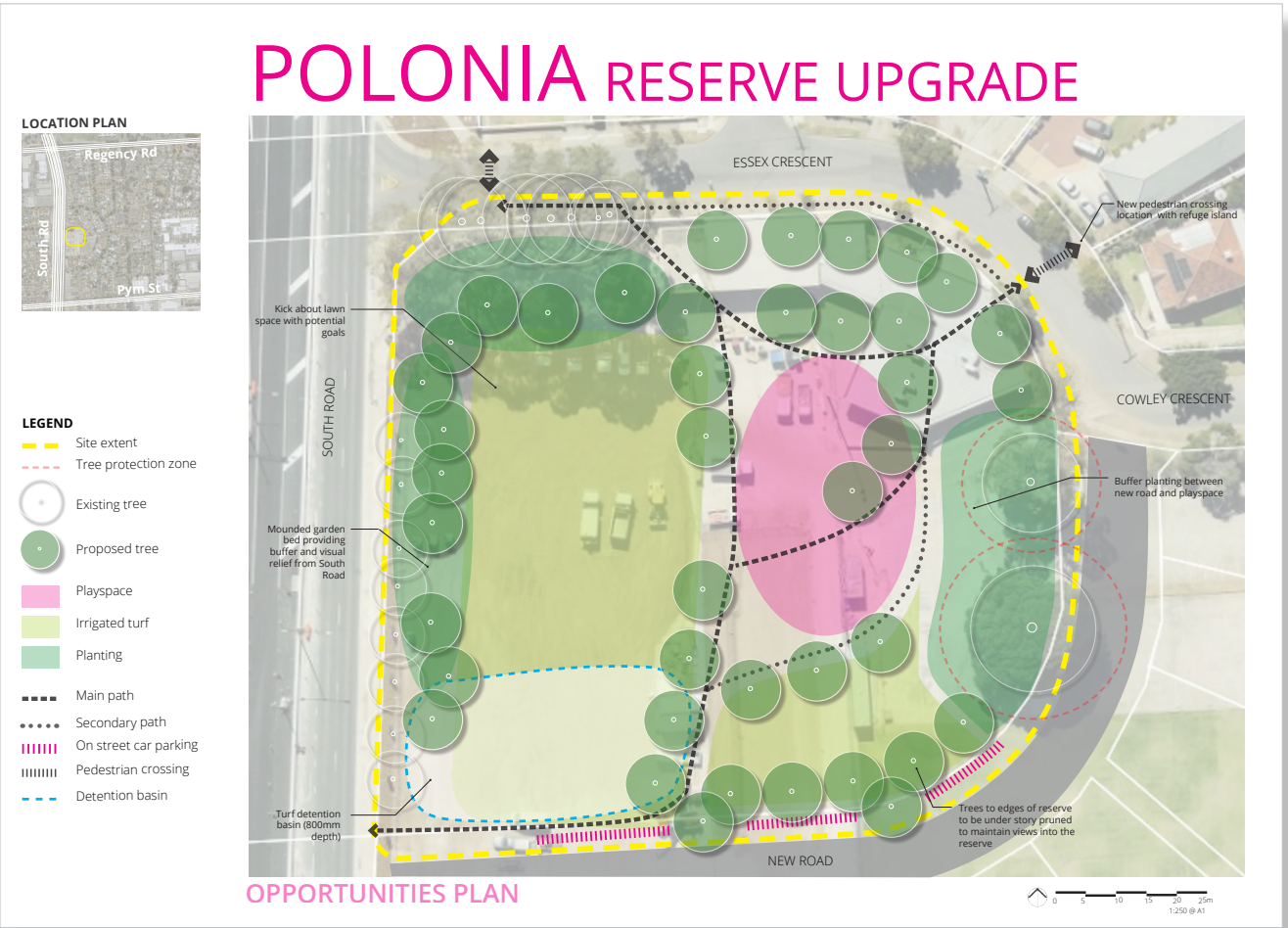
Flyers were also delivered to the local community with a QR code linking them to the online survey. In addition to this, two community days were held on site with the online survey presented as posters. The community were given the opportunity to discuss their thoughts and ideas with elected members, and staff from the City of Port Adelaide Enfield and Birdseye Studios.

Further to the online survey, staff from the City of Port Adelaide Enfield Council met with Dozynki Incorporated South Australia (25th August 2021) who provided a summary letter following the meeting.

RESPONSE

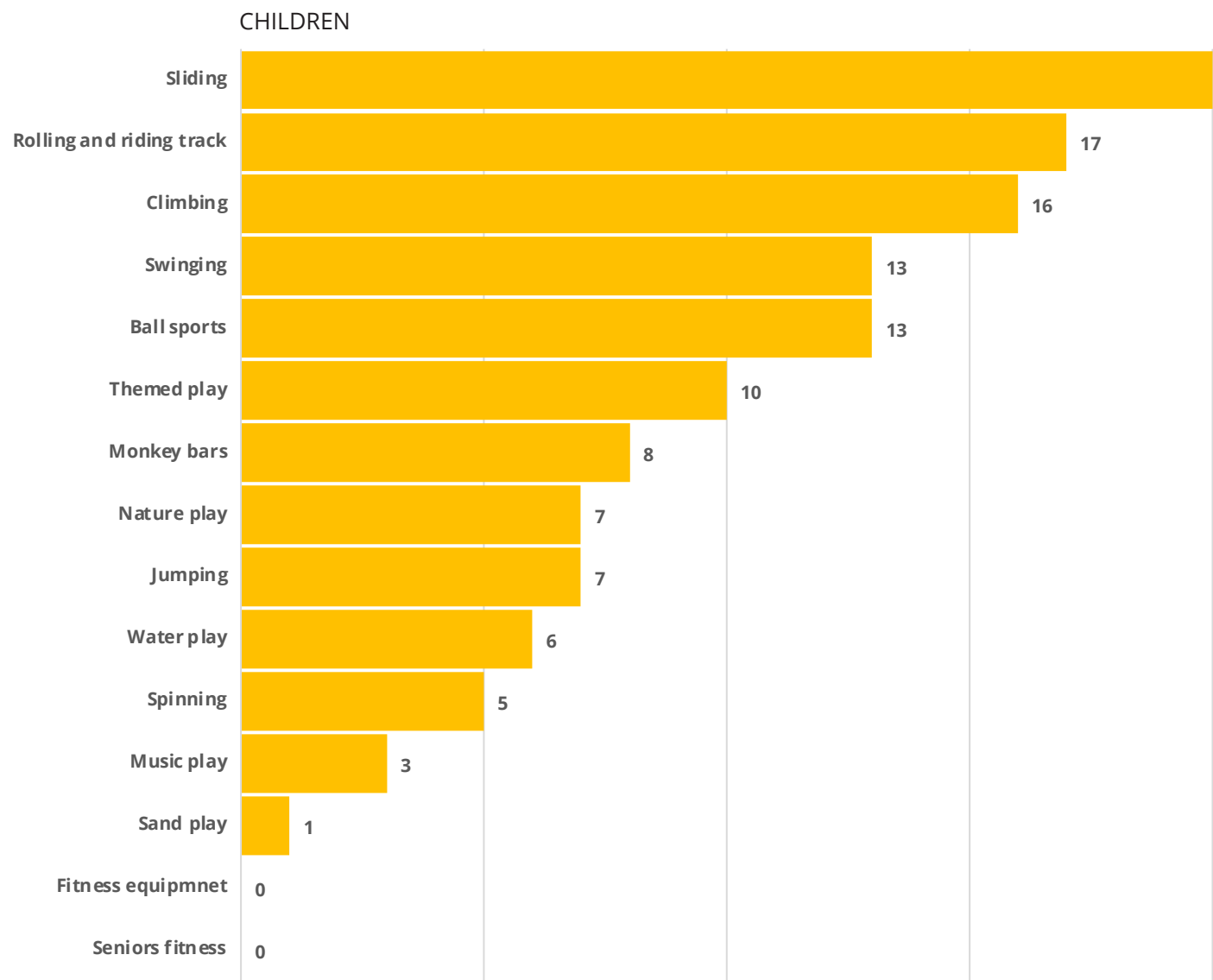
The following pages collate the findings from the online survey and community days.

A total of 89 survey responses were received.
2 written responses.
1 hand drawing.



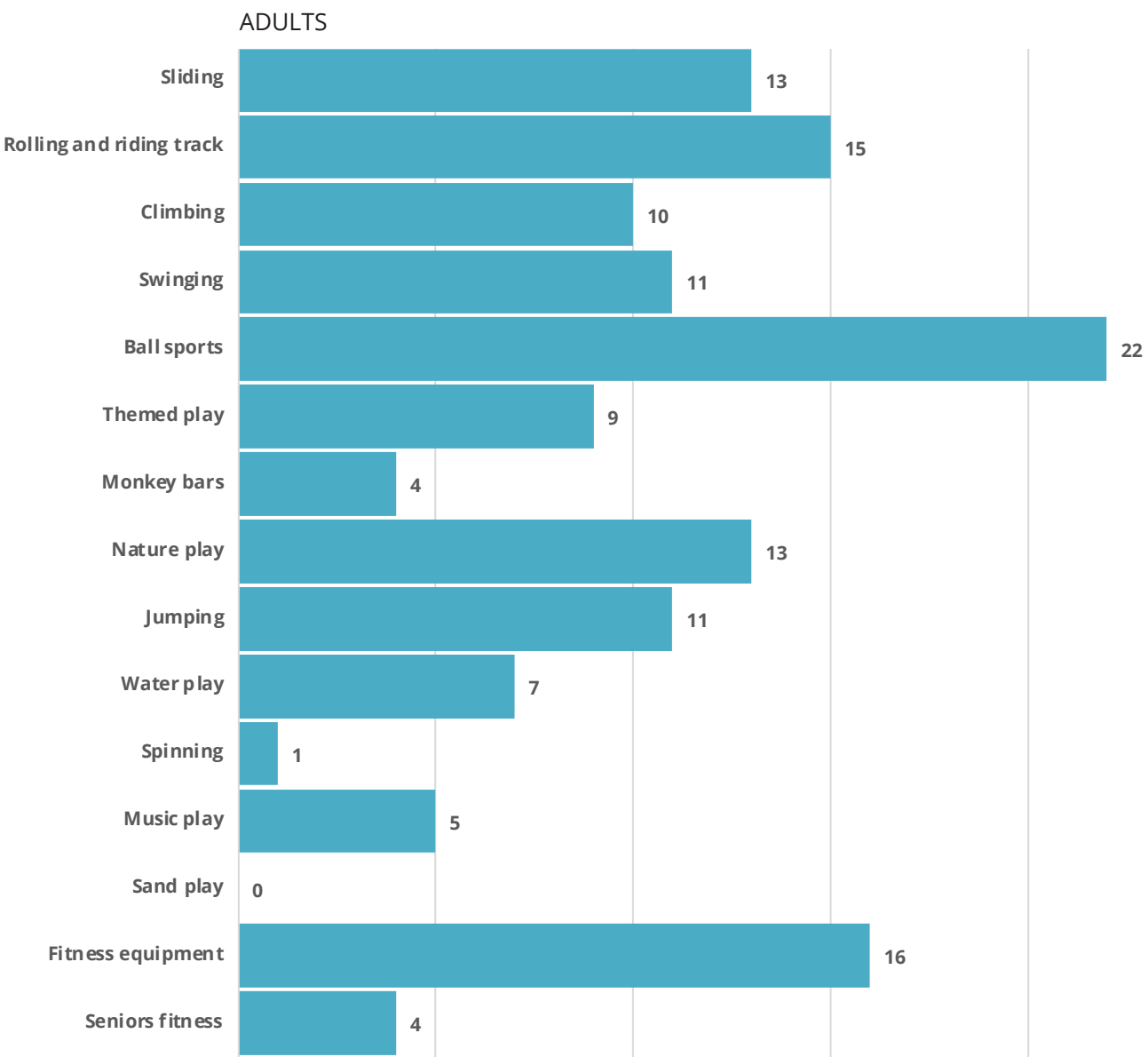
SURVEY FINDINGS

PLAY EXPERIENCES
Participants were asked to choose their top three play experiences from from a number of example images.



Responses:
42 Responses

Comment
Results show that the top three play experiences most preferred by children surveyed were:
- Sliding (16%)
- Rolling and riding track (13%)
- Climbing (13%)



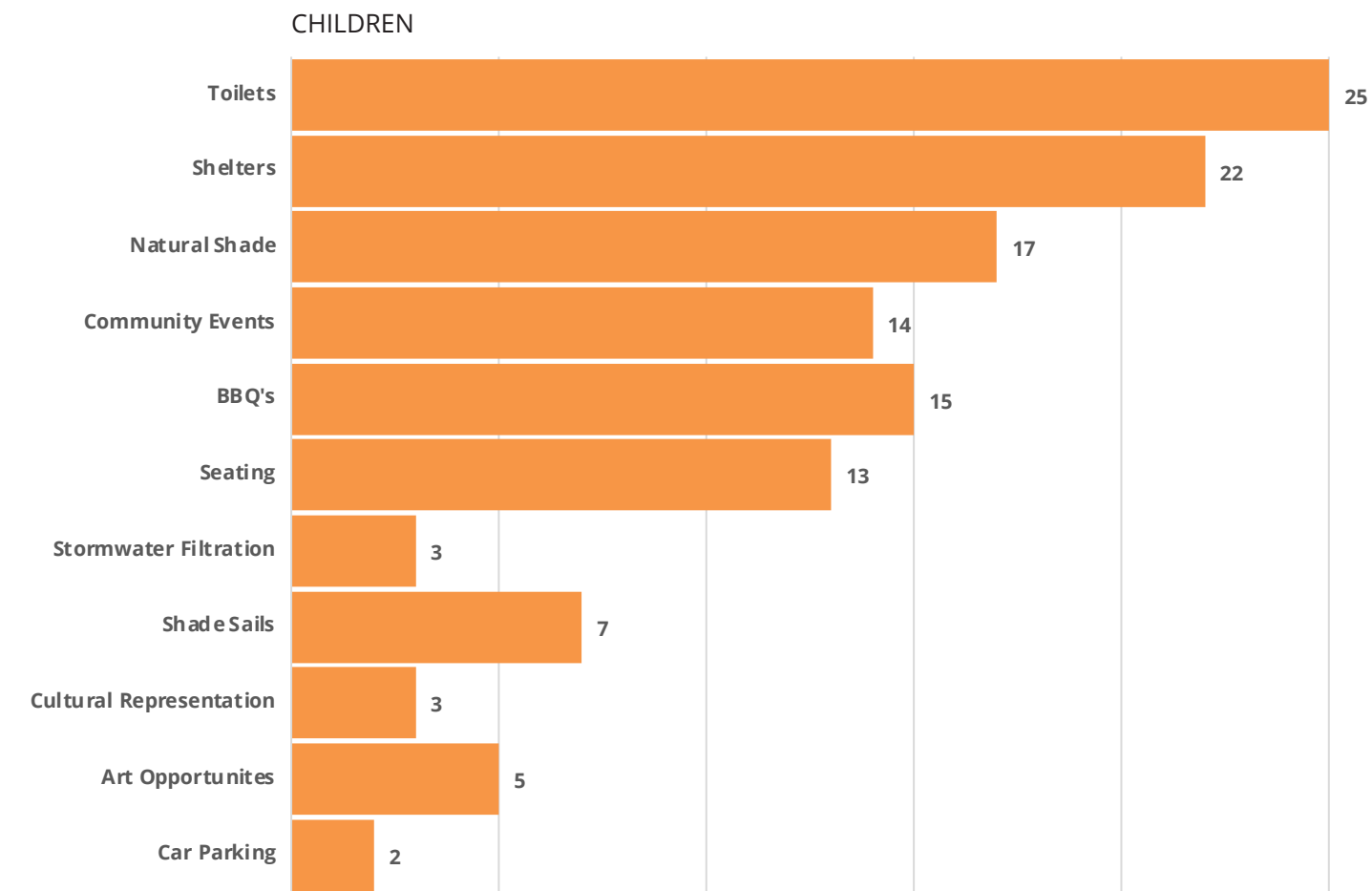
Responses:
47 Responses

Comment:
Results show that the top three play experiences most preferred by adults surveyed were:
- Ball sports (16%)
- Fitness equipment (11%)
- Rolling and riding track (11%)

SURVEY FINDINGS

RESERVE FACILITIES

Participants were asked to choose their top three preferred reserve facilities from a number of example images.



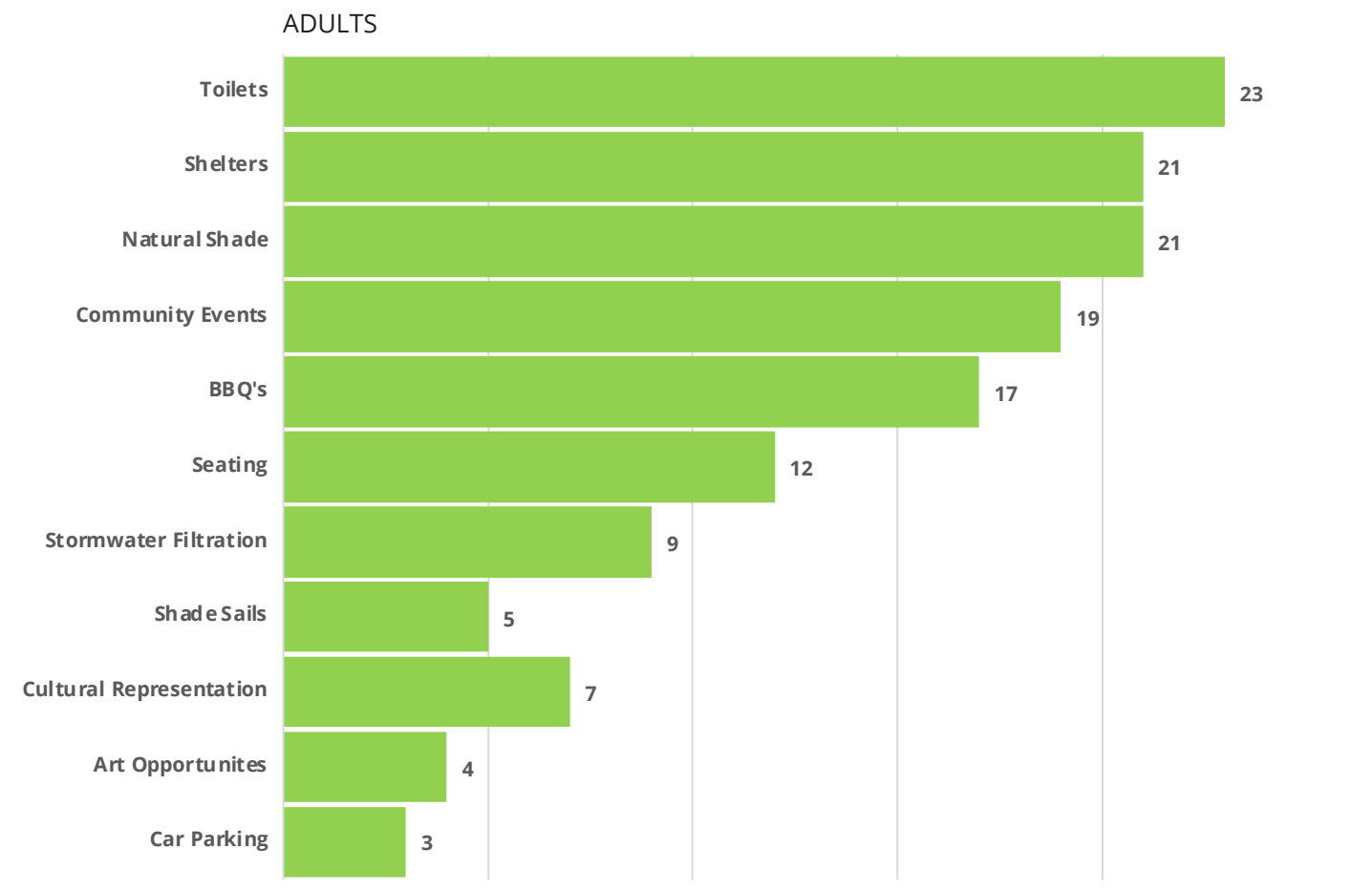
Responses:

42 Responses

Comment:

Results show that the top three reserve facilities most preferred by children surveyed were:

- Toilets (20%)
- Shelter (17%)
- Natural shade (14%)



Responses:

47 Responses

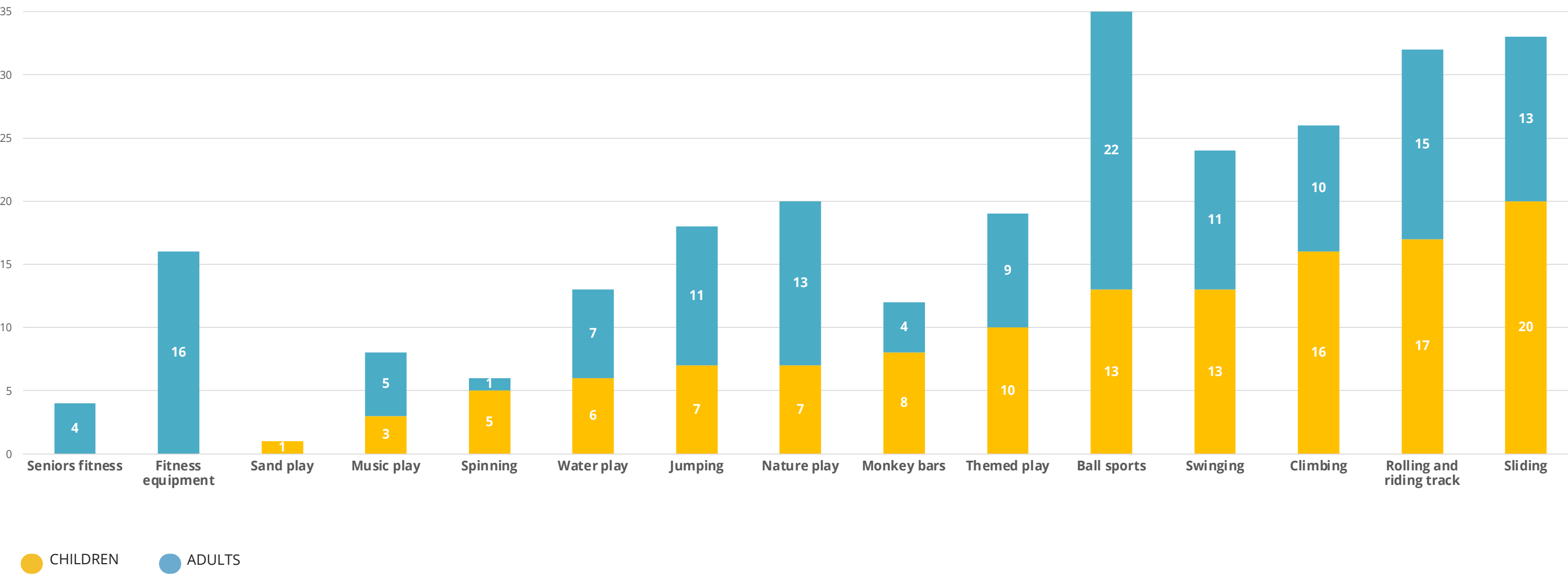
Comment:

Results show that the top three reserve facilities most preferred by adults surveyed were:

- Toilets (16%)
- Shelter (15%)
- Natural shade (15%)

SURVEY SUMMARY

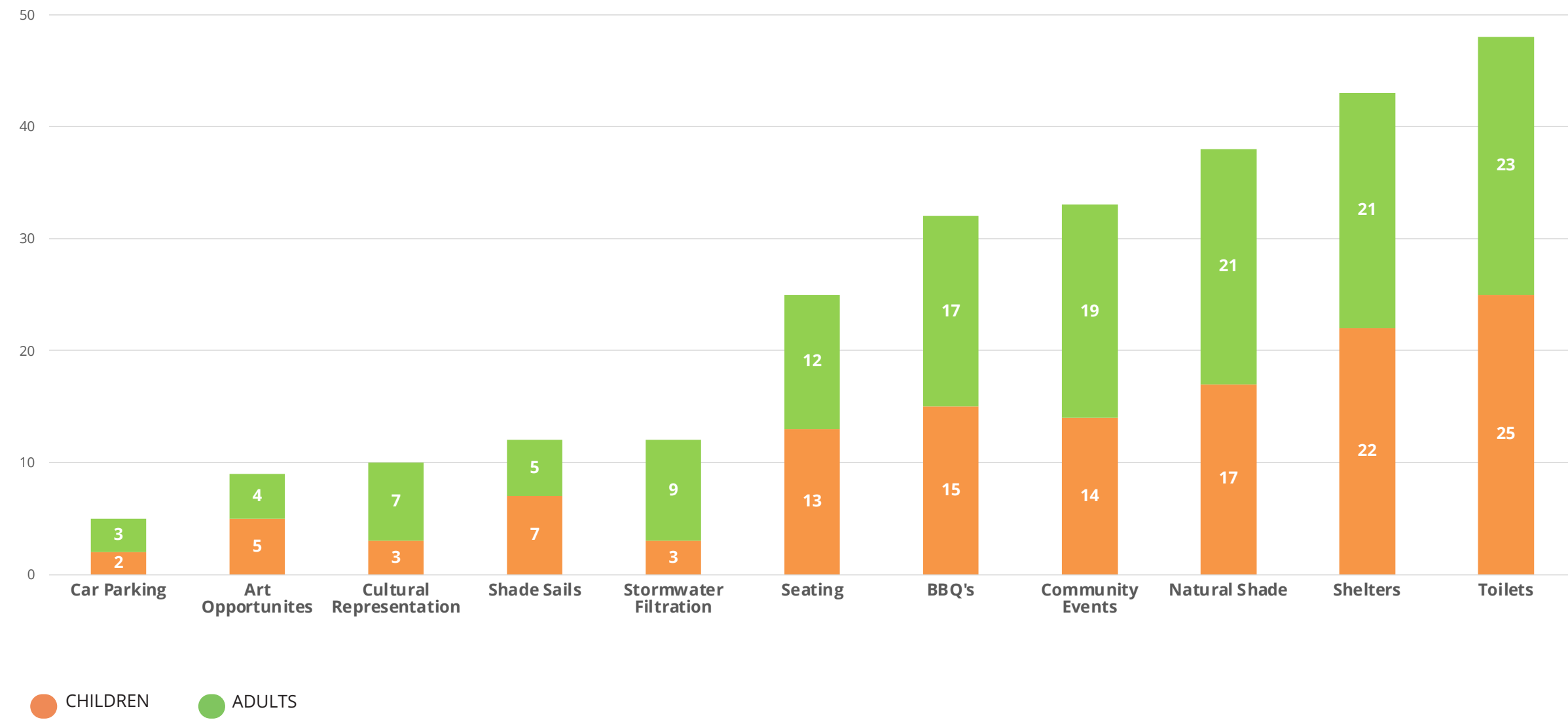
PLAY EXPERIENCES



- Comment:**
The combined results show that:
- 1. Overall, ball sports is the most popular play experience with 13% of respondents including it in their top three preferred play experiences.
 - 2. Sliding and a rolling and riding track were also high priority items.
 - 3. A significant portion of adult respondents would like to see fitness equipment included in the reserve upgrade.
 - 4. Sand play, music play, and seniors fitness equipment were the least preferred play experiences.

SURVEY SUMMARY

RESERVE FACILITIES



Comment:
The results show that:

- 1. Overall, toilets were the most preferred reserve facility with 17% of respondents including it in their top three preferred reserve facilities.
- 2. Shelter and natural shade were also high priority items.
- 3. Car parking and art work were not a high priority for respondents.

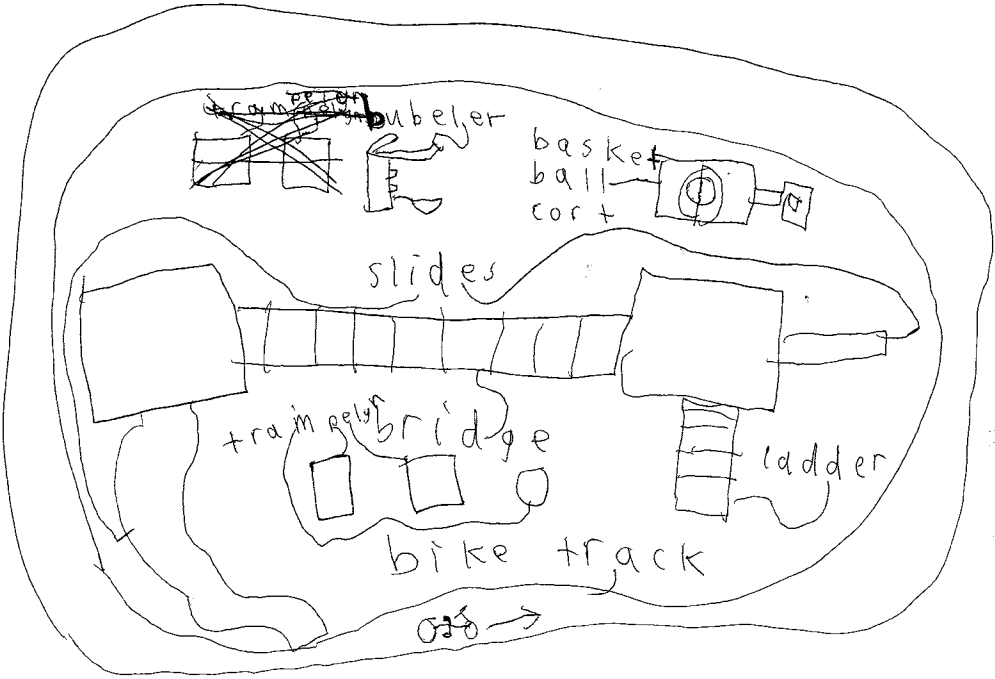
ADDITIONAL FINDINGS

COMMUNITY DAY OBSERVATIONS

1. Multiple adult attendees voiced their fondness of the existing fig tree and asked if it would be retained. One attendee mentioning that it would make a great place for a park bench.
2. Many adult attendees mentioned that the playspace should be well shaded.
3. Many attendees expressed their desire to have a fence along the South Road reserve boundary.
4. Most attendees walked or rode their bikes to the community day.
5. Many of the elderly attendees mentioned that it would give them somewhere to go for a walk.
6. A strong presence of representatives from the Croydon Kings Football Club attended both of the community days.
7. Multiple attendees mentioned that they would like a rolling and riding track in the reserve.
8. One attendee mentioned the idea of including a boccee ball court in the reserve design.
9. Another attendee expressed the importance of including butterfly and ladybird attracting plants within the reserve design.
10. An attendee mentioned that there should be enough power outlets to facilitate future community events.
11. A member from the Croydon Kings Football Club suggested that a main reserve sign would be a great way to celebrate the reserve name and history.
12. An attendee mentioned that if trampolines were included in the playspace design that there should be three installed just in case one needs to be closed for maintenance.

WRITTEN COMMENTS & RESPONSES

1. One attendee provided a written list of considerations for the playsapce design including the following points:
 - 2 toddler swings
 - Adult swings
 - Ground level toddler trampoline
 - Water play equipment same as Bonython Park
 - Check out Will Play Equipment
 - Rock Play/Rope Netting
 - Shade sails above main play area
2. Dozynki Incorporated in South Australian provided a letter response outlining the establishment of the Polish Community within Adelaide and the important role that the reserve has played as a meeting place for them. They expressed their desire to to see this part of the reserve history celebrated within the new design.
3. Child's drawing of playspace design



CONCLUSION

CONCLUSIONS

Overall a total of 92 formal responses were submitted for the Polonia Reserve Upgrade Community Consultation. These responses consisted of 89 online survey responses, 2 written responses and 1 hand drawing. Of these responses, 46% were children. Attendees at the community days were mostly young families and some elderly members from the community. Most attendees were local residents who either walked or rode their bikes to the community consultation day. There were also a significant portion of attendees who were members from the Croydon Kings Football Club or members of the Polish community in Adelaide.

Of the data collected, it was great to see that almost half of the respondents were children. Their top three preferred play experiences included sliding, a rolling and riding track and climbing. Additionally, the top three play experiences favoured by adult respondents were ball sports, fitness equipment and a rolling and riding track. Many informal conversations with attendees during the community days supported these results, in particular a rolling and riding track. Another attendee suggested the idea of installing a boccee ball court for teenagers, who were arguably the least represented age group at the community day. Overall, the top three play experiences preferred by all respondents combined were:

- Ball sports
- Sliding
- Rolling and riding track

Conversations with adults during the community day revealed that they usually addressed their reserve facility preferences before their favoured play experiences, perhaps placing more value in ensuring the reserve was a comfortable space to be in. Common reoccurring topics during the community days were the inclusion of a toilet in the reserve design and ensuring that the playspace was sufficiently shaded. Many adults also asked if the existing fig tree would be retained. These conversations supported the online survey results which revealed that the top three preferences of reserve facilities for both adults and children were:

- Toilets
- Shelter
- Natural Shade

Additional verbal and written responses from the Polish community and Croydon King’s members expressed their desire to see their historical use of the site as a meeting place for the Polish Community celebrated in the reserve design, theming or signage.

Using the data collected from the consultation, Bridseye Studios will work with the City of Port Adelaide Enfield to develop a concept design for Polonia Reserve.

NEXT STEPS

- Concept Design
Dec 2021
- Online Community Consultation (Second Round)
Jan 2022
- Design Development
Feb 2022
- Construction Documentation
Mar 2022