



Joyce Snadden and Old Port Canal Reserves Redevelopment, Port Adelaide Consultation Summary Report

September 2023

Joyce Snadden and Old Port Canal Reserves Consultation Summary Report

Project No. 23JSR Date of Issue 13.09.23



Acknowledgments

We acknowledge the Traditional Owners of country and recognise their continuing connection to land, waters and culture. We pay our respects to Elders past, present and emerging.

Contents

1.0 Introduction
1.1 What did we do?
2.0 The Project Area
3.0 Consultation Summary: Children 0-5
3.1 Consultation Summary: Children 6-10
3.2 Consultation Summary: Youth 11-18
3.3 Consultation Summary: Adults 19+
4.0 Other Comments
5.0 Consultation Images
6.0 Conclusions and Recommendations
Appendix A: Consultation Posters
Appendix B: 'What amenity would you like to see within the Joyce Snadden and Old Port Canal Reserves?'
Appendix C: 'What play experiences would you like to see within the Joyce Snadden and Old Port Canal Reserves?'
Appendix D: Other Comments

Joyce Snadden and Old Port Canal Reserves Consultation Summary Report

Project No. 23JSR Date of Issue 13.09.23



1.0 Introduction

WAX Design has been engaged by the City of Port Adelaide Enfield to assist in preparing a concept plan for the Joyce Snadden and Old Port Canal Reserves.

The consultation aimed to understand the communities use of the reserves, the elements they like, cherish, value; and elements they would like to change, improve or remove.

WAX Design's approach to the project is to undertake a collaborative design process to encourage the inclusion of the community in the consultation and design process. This design approach enables the design team to directly discuss with the community the experiences, infrastructure, and potential that the reserves needs to deliver.

The consultation will be used to inform the preparation a concept plan that balances the provision of increased amenity and function with community requirements.

1.1 What did we do?

WAX facilitated an on site consultation session with local residents and community members at Joyce Snadden Reserve on the 29th of July 2023. Additionally, a second community consultation session was undertaken at the Port Plaza on the 10th July 2023. Both sessions aimed to collect practical 'first hand' knowledge of the reserves and how they currently functions as well as their future potential.

This was achieved through an interactive process, encouraging residents and the local community to consider their aspirations and ideas for the site.

The sessions comprised of:

- 'Cognitive mapping' of the values associated with the reserve as it currently exists. The community identified what areas they liked and didn't like and potential areas for improvement.
- Two inspirational activities which allowed participants to indicate their preference for the amenity and types of play or experiences that they would like to see in the Joyce Snadden and Old Port Canal Reserves in the future. Participants were given five sticky dots per poster and were given the opportunity to choose their top five choices.
- Post-it note comments which reflected any of the communities additional ideas.

The on site and community sessions were supported by an online survey, and consultation session with children of Portside Christian College, both facilitated by the City of Port Adelaide Enfield Council.

Approximately 160 people actively engaged with the process.



Joyce Snadden and Old Port Canal Reserves Consultation Summary Report

Project No. 23JSR Date of Issue 13.09.23



2.0 The Project Area

Joyce Snadden Reserve and the Old Port Canal Gardens are located in Port Adelaide, South Australia. The project scope includes the western Joyce Snadden Reserve and the Old Port Canal Gardens to the east, with the main vehicular access separating the two sites via Minories Street.

Joyce Snadden Reserve has frontage to the Port Adelaide Canal and adjoining Port Creek, and currently contains basic amenity including a small play space and rotunda, with a shared use path linking the site in an east-west direction.

The neighbouring Port Canal Gardens consist of raised garden beds, open lawns, large trees and a sunken amphitheatre, with the current layout designed and built during the 1990's.

Both sites have a rich Kaurna and Port Canal cultural history, and are located in close proximity to the nearby proposed cultural centre, Yitpi Yartapuultiku.



Joyce Snadden and Old Port Canal Reserves Consultation Summary Report

Project No. 23JSR Date of Issue 13.09.23



3.0 Consultation Summary: Children 0-5

Each child was given (5) sticky dots which they could place on the potential play elements they 'liked' for the Joyce Snadden and Old Port Canal Reserves. The following are the top choices from all responses.

What play experiences would you like to see within the Joyce Snadden and Old Port Canal Reserves?

1. Tunnels, Slide (3)
2. Balance Play, Nature Play, Climbing, Inclusive Play, Monkey Bars/Rope Challenge, Spinning, Challenge and Height (2)
3. Elevated Fort/Bridge, Individual Swings, Junior Bike Track, Sand/Nautical Play, Water Play, Outdoor Games (1)

Each child was given (5) sticky dots which they could place on the potential amenity elements they 'liked' for the Joyce Snadden and Old Port Canal Reserves. The following are the top choices from all responses.

What amenity would you like to see within the Joyce Snadden and Old Port Canal Reserves?

1. Drinking/Refill Station, Gravel Walking Trails (2)
2. Signage, All Abilities Access, Enhanced Ecology, Informal Beach Access, Bike Parking, Shelter, Better Site Connectivity, Cycle Connections, Cultural Story Telling, Formal Water Access, Natural Seating (1)

Summary

- Although being the smallest portion of actively engaged participants the findings still assist in communicating the youngest generations aspirations and ideas for the site.
- The play experiences chosen by young children reflect an appreciation for provision of challenging play elements, including climbing and balancing.
- Experiences chosen by children suggest a strong desire for a varied and diverse range of play experiences including tunnels, slides and natural elements.
- The amenity items chosen by the children prioritised drinking and refill facilities and improved site access and movement.



Joyce Snadden and Old Port Canal Reserves Consultation Summary Report

Project No. 23JSR Date of Issue 13.09.23



3.1 Consultation Summary: Children 6-10

Each child was given (5) sticky dots which they could place on the potential play elements they 'liked' for the Joyce Snadden and Old Port Canal Reserves. The following are the top choices from all responses.

What play experiences would you like to see within the Joyce Snadden and Old Port Canal Reserves?

1. Trampolines (10)
2. Slide (7)
3. Water Play (6)
4. Climbing, Balance Play, Inclusive Play, Outdoor Games (5)
5. Money Bars/Rope Challenge, Spinning, Sand/Nautical Play (4)

Each child was given (5) sticky dots which they could place on the potential amenity elements they 'liked' for the Joyce Snadden and Old Port Canal Reserves. The following are the top choices from all responses.

What amenity would you like to see within the Joyce Snadden and Old Port Canal Reserves?

1. Informal Beach Access (11)
2. Signage (9)
3. Barbeque (7)
4. Cultural Storey Telling, Quiet Places (6)
5. Drinking/Refill Station, Bike Parking, Waterfront Activation, Natural Seating (5)

Summary

- Choices by children suggest a strong desire for varied play experiences including bouncing and sliding.
- Multiple participants expressed the desire for water play integration in the playspace.
- The amenity experiences chosen by the children reflect a desire to interact with the port canal, and its rich cultural history, through waterfront access and story telling opportunities.
- Way-finding, signage and barbeques were highly valued amenity items for children within the community.



Joyce Snadden and Old Port Canal Reserves Consultation Summary Report

Project No. 23JSR Date of Issue 13.09.23



3.2 Consultation Summary: Youth 11-18

Each youth participant was given (5) sticky dots which they could place on the potential play elements they 'liked' for the Joyce Snadden and Old Port Canal Reserves. The following are the top choices from all responses.

What play experiences would you like to see within the Joyce Snadden and Old Port Canal Reserves?

1. Court Ball Sports (16)
2. Grass Ball Sports, Open Space (9)
3. Monkey Bars/Rope Challenge, Spinning (7)
4. Tunnels, Trampolines, Outdoor Fitness (6)
5. Cubby, Individual Swings, Climbing (4)

Each youth participant was given (5) sticky dots which they could place on the potential amenity elements they 'liked' for the Joyce Snadden and Old Port Canal Reserves. The following are the top choices from all responses.

What amenity would you like to see within the Joyce Snadden and Old Port Canal Reserves?

1. Night Lighting (15)
1. Formal Water Access (12)
2. Barbeque, Natural Shade (8)
3. All abilities access (7)
4. Informal Beach Access, Shelter, Quiet Spaces (6)

Summary

- Experiences chosen by youth members suggest a strong preference for outdoor games, fitness and ball sports provisions within the reserves.
- Findings suggest the requirement for areas that support social interaction opportunities through play and recreation, and amenity including barbeque facilities.
- Participants expressed the desire to activate the site at night through improved outdoor lighting.
- The amenity experiences chosen by the youth participants reflect a desire to interact with and access the water in the Port Canal.
- Constructed and natural shade were common priority items for youth members of the community.



Joyce Snadden and Old Port Canal Reserves Consultation Summary Report

Project No. 23JSR Date of Issue 13.09.23



3.3 Consultation Summary: Adults 19+

Adults were given the opportunity during on site and community sessions, and the supporting online survey to advocate for potential play elements they 'liked' for the Joyce Snadden and Old Port Canal Reserves. The following are the top choices from all responses.

What play experiences would you like to see within the Joyce Snadden and Old Port Canal Reserves?

1. Outdoor Fitness (44)
2. Court Ball Sports (42)
3. Open Space (34)
4. Individual Swings (31)
5. Nature Play, Trampolines (27)

Adults were given the opportunity during on site and community sessions, and the supporting online survey to advocate for potential amenity elements they 'liked' for the Joyce Snadden and Old Port Canal Reserves. The following are the top choices from all responses.

What amenity would you like to see within the Joyce Snadden and Old Port Canal Reserves?

1. Drinking/Refill Station (55)
2. Natural Shade (53)
3. Night Lighting (51)
4. Picnic Benches (44)
5. Shelter (42)

Summary & Other Comments

- Active recreation opportunities including outdoor fitness, ball sports, court play and open space featured strongly for adult responses.
- There is an obvious need to upgrade the playspace to include play equipment that caters for all ages and abilities, with a diverse range of experiences.
- Adults expressed their desire for an activated space which promotes social congregation.
- More shade opportunities are needed within the reserves, both natural and constructed.
- Night lighting is currently not adequate and needs to be updated to assist site usability and safety.
- Improved amenity items to support a range of site activities were well supported, including a drinking and refill station, picnic benches and shelter.



Joyce Snadden and Old Port Canal Reserves Consultation Summary Report

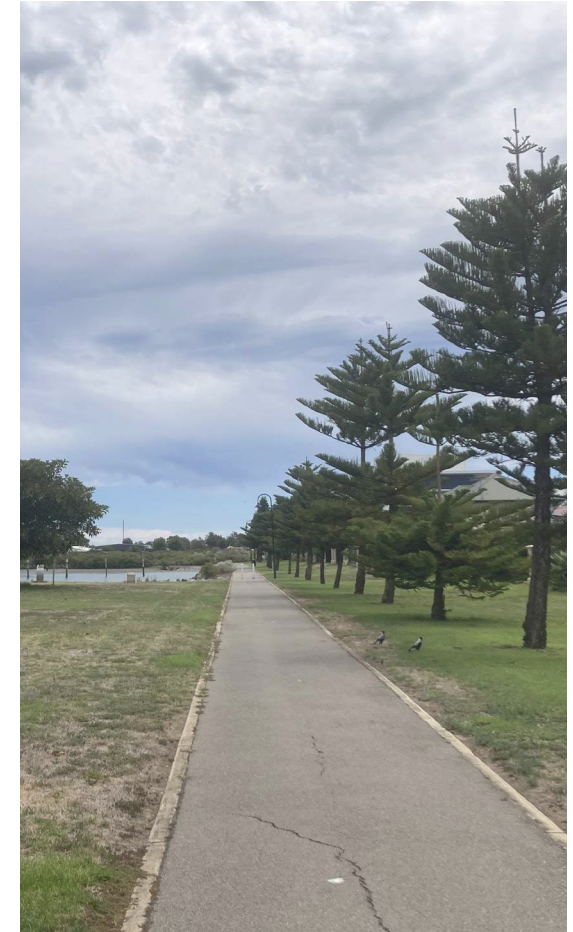
Project No. 23JSR Date of Issue 13.09.23



4. Other Comments

As part of the on site and in person formalised engagement activities, the community were given the opportunity to contribute post-it note comments which reflected their additional ideas, needs and desires for the Joyce Snadden and Old Port Canal Reserves. The online consultation process also provided opportunity for the community to provide any additional ideas they would like included in the process. Common areas for redevelopment, improvement or replacement included;

- A strong preference for water activities including canoeing, kayaking, snorkelling, swimming and fishing. (12)
- The potential for dog amenity and provisions that support the desire to utilise the reserve with pets. (10)
- Numerous comments were raised regarding toilet provision, both in regards to the need for the inclusion of toilets on the site and also the concern with potential vandalism. (8)
- A desire for more low level native plantings and flowers that encourage local birds and butterflies. (6)
- Greater connections throughout the reserve for pedestrians, bikes, scooters and skateboards (6), and connection beyond the site to Yitpi Yartapuultiku. (4)
- Management of vehicle access to site and review of parking provision (3)
- Retention of existing 'green space' and an increase in local fauna and flora, promoting biodiversity. (4)
- Water access opportunities, through both formal/compliant and informal opportunities. (6)
- Safety concerns and feelings of intimidation associated with camping and homelessness occurring on site. (5)
- Desire for a shared, flexible space that offers opportunities for temporary coffee vans, food trucks, and market stalls. (6)
- Desire for improved car parking facilities which can continue to facilitate driving lessons. (4)
- A preference for designated areas for utilisation with skateboards, scooters and bikes. (4)
- Safety concerns surrounding the housing trust properties and associated behaviour on site. (3)
- Requirement for improved security and CCTV cameras on site. (3)



Joyce Snadden and Old Port Canal Reserves Consultation Summary Report



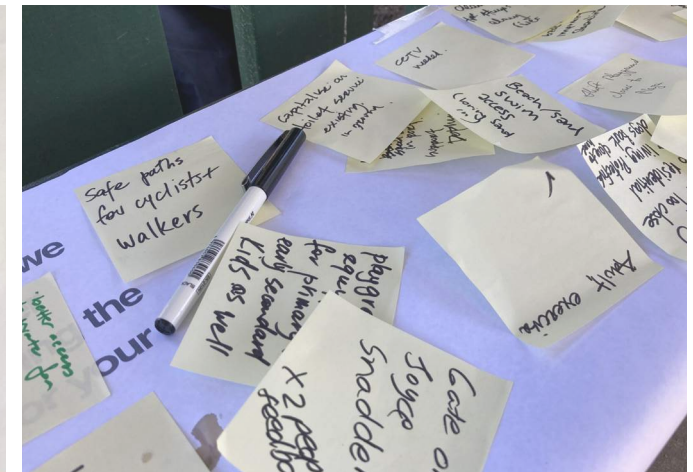
5.0 Consultation images



What play experiences would you like to see within the Reserves?



What amenity would you like to see within the Reserves?



Other Comments

Joyce Snadden and Old Port Canal Reserves Consultation Summary Report

Project No. 23JSR Date of Issue 13.09.23



6.0 Conclusions and Recommendations

Joyce Snadden Reserve and the Old Port Canal Gardens are recognised by the children, youth and adults consulted as highly valued and important open spaces within Port Adelaide, with strong cultural and historic qualities.

Of the approximately 160 consultation participants, including online survey contributors, 120 were adults, 23 youth and 15 children which provides a greater weighing to the adult perspective when reviewing the combined overall responses.

The majority of responses and comments received were positive with regards to the proposed redevelopment of the reserves, and supportive of improvements to play, open space, recreation and waterfront amenity.

Key aspirations are summarised by;

- Adults and youth highest priorities for new play experiences included court ball sports, open space, outdoor fitness and outdoor games.
- Children's and youth preferences highlighted the desire for active and challenging play including trampolines, slides, swings, rope climbing, balance elements and monkey bars. Creative and investigative choices of sand and water play also featured.
- The highest responses received for new reserve amenity improvements included drinking fountains, night lighting, shelters, picnic facilities and all abilities access.
- Activation of the existing waterfront was also highly rated including provision of informal beach access and formal water access.

The majority of the discussion points and additional comments received by the community focused on a desire to improve the current level of amenity and activation provision of the reserves, to create a space that is unique to the location and provides something for everyone in a safe and inclusive place, reflective of its green and natural environment.

Additional considerations include;

- Improved safety through lighting, improved site lines, CPTED strategies, reduction of anti-social behaviour on site and potential CCTV cameras.
- Opportunities for waterfront activation and direct access to strengthen existing character, define as a destination and offer new site experiences, including kayaking, snorkelling, swimming

and fishing.

- Dog amenity and provisions that support the desire to utilise the reserve and open recreation space with pets.
- A review of toilet facilities on site.
- Improved connections through the site and beyond to Yitpi Yartapuultiku, for pedestrians and cyclists.
- A review of parking provision and vehicle access through the site.
- Retention of existing 'green space' and an increase in local fauna and flora, promoting biodiversity.

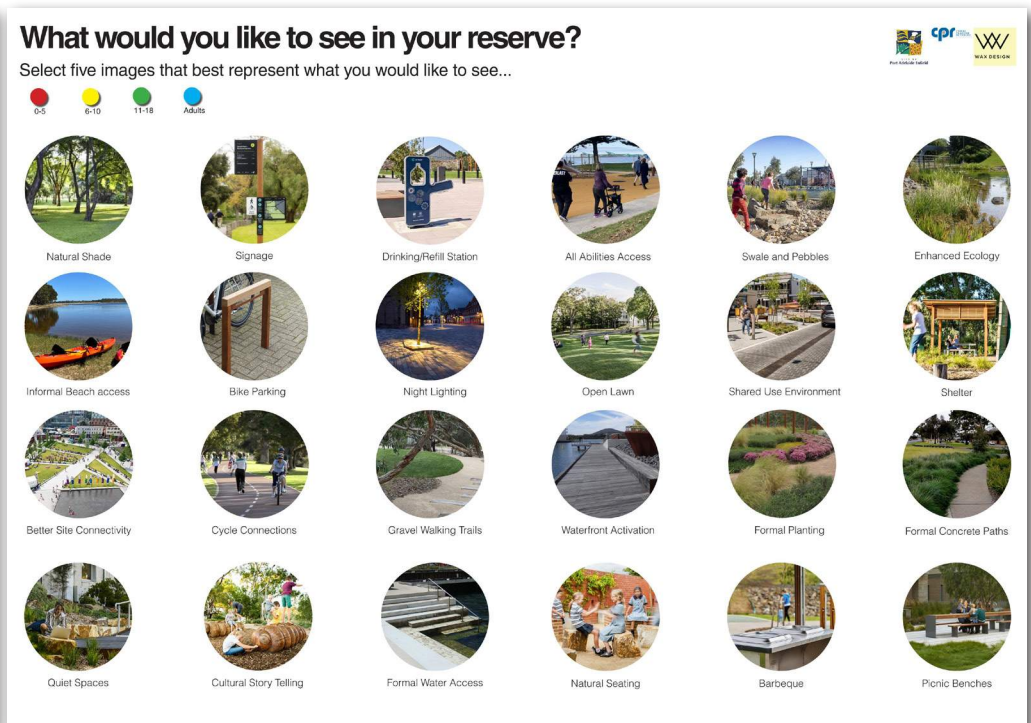
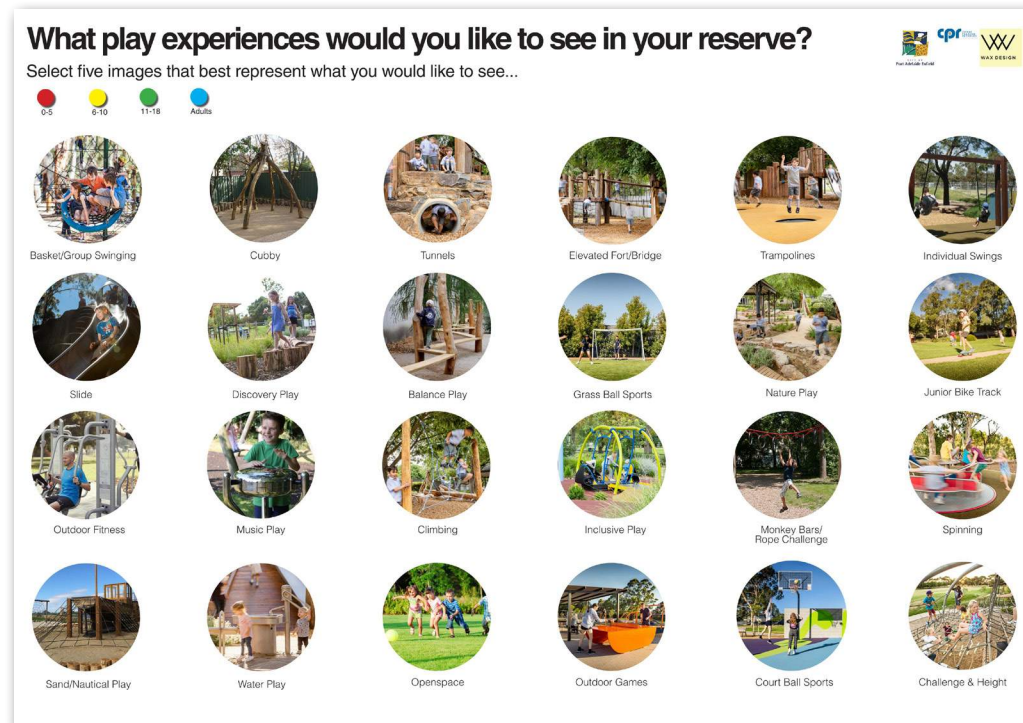
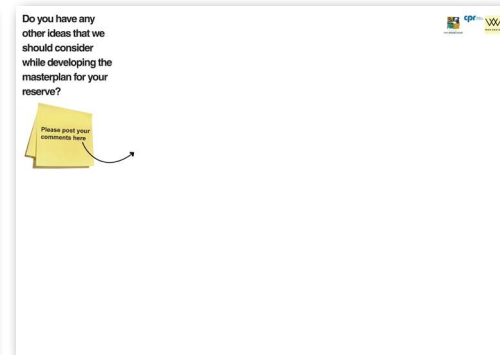


Joyce Snadden and Old Port Canal Reserves Consultation Summary Report

Project No. 23JSR Date of Issue 13.09.23



Appendix A: Consultation Posters

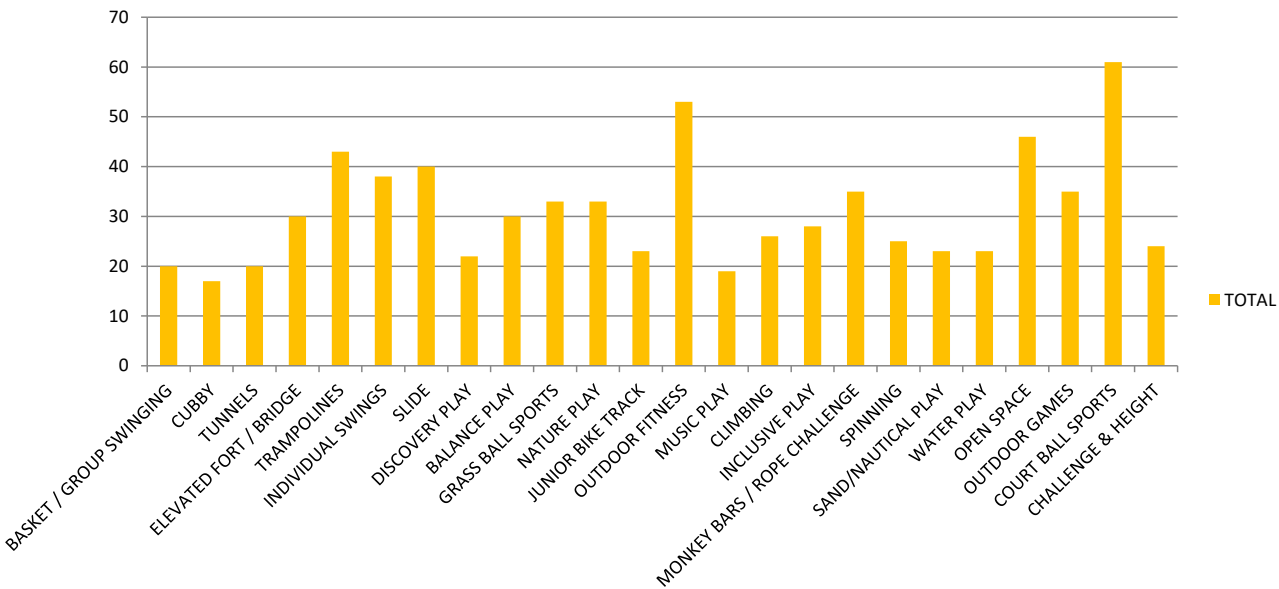
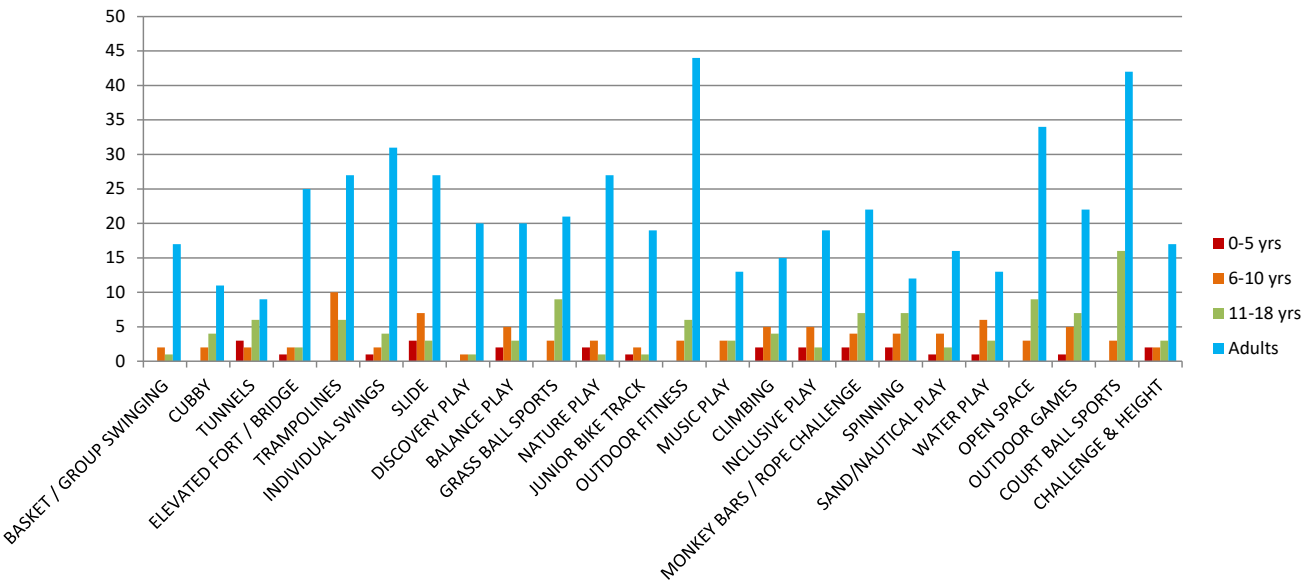


Joyce Snadden and Old Port Canal Reserves Consultation Summary Report

Project No. 23JSR Date of Issue 13.09.23



6.2 Appendix C: What play experiences would you like to see within the Joyce Snadden and Old Port Canal Reserves?’

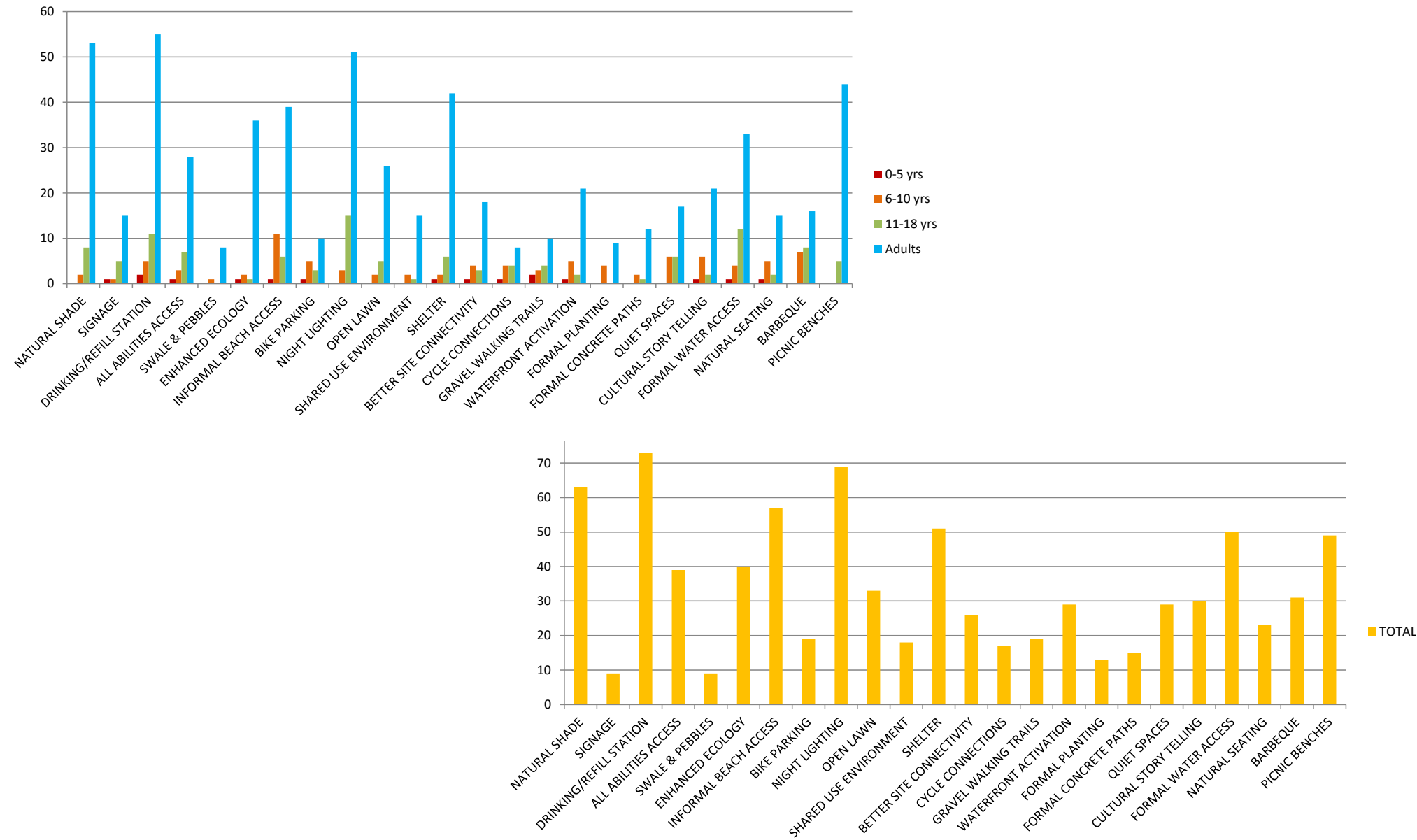


Joyce Snadden and Old Port Canal Reserves Consultation Summary Report

Project No. 23JSR Date of Issue 13.09.23



Appendix B: 'What amenity would you like to see within the Joyce Snadden and Old Port Canal Reserves?'



Joyce Snadden and Old Port Canal Reserves Consultation Summary Report

Project No. 23JSR Date of Issue 13.09.23



6.3 Appendix D: Comments

Prefer current playground location – can see kids from house and kids can see dolphins when playing (2)
Current usability of site car parking for driving instructors (2)
Dislike stumps along river
Dislike proposal for relocation of playground closer to plaza (2)
Concerns over rock embankment deterioration – people are throwing rocks into the water
Lack of natural shade
Dislike people driving on the track
Road creates block between reserve
Dislike housing trust proximity to park/behaviour associated (3)
Dislike the waste water outlet (black sludge entering canal)
Dislike amping/homelessness occurring in area (5)
Intimidation felt in area (2)
Dislike idea of a dog park – don't want dogs barking too close to residential living
Dislike the sunken amphitheatre (2)
Canoe, kayak, snorkelling landing/access/ramp/pontoon (12)
Dog park (10)
Safe toilets (8)
Pedestrian bridge to cross river/link to (4)
Retention of existing 'green space', increase in local fauna and flora and promotion of biodiversity. (4)
Flying fox (4)
Increased, improved parking (2)
Better barbeque and picnic facilities (2)
Dog drinking fountain/Waste bags

Community garden
CCTV needed (3)
DDA access to water (2)
Safe swimming area (2)
Irrigated turf/updated irrigation (2)
Fishing – better access to the water, fishing platforms (2)
Prioritisation of open space (3)
Removal/relocation of housing trust (3)
Native planting, native flowers, bird and butterfly attracting plants (6)
Fenced children's play (2)
Safe cycling and walking pathways (2)
Gate to prevent vehicle entry (3)
Improved signage (dry zone notices) (2)
Skate/parkour friendly space (4)
Café, temporary coffee vans, market stalls, farmers market (6)
Mountain bike trail/bike paths (2)
Beach/sand access (2)
Swimming pool (3)
Community garden
Increased bins to reduce litter
Place-making mural
Viewing point for dolphin watching
Improve connections – YY underpass
Support dolphins - bring dolphins back in by improving shoreline
Manage speed boat rules in port
Natural pathways
Picnic shelter - that doesn't encourage camping

Nature play
Adult exercise
Hand washing stations
Space for sport (soccer goals)
Ramp for water access
Drinking fountain
Butterfly trail / fairy garden
Greenhouse / community garden
Bins
Hand washing stations
Areas for younger children
Playground for primary and secondary kids
Charging stations
Increased vegetation
Basketball court
Soccer pitch
Night activation through 24hr lighting
Cultural signage
Shared use plaza (like Aldinga Main Street)
Increased lighting along foreshore from Hart Street
Strengthened open space and foreshore walking connections
Shelter for birthday parties and outdoor events
Monorail train
Improved carpark design
Sand dancing area
Pathways and balance elements for children
Waterslide