



YITPI YARTAPUULTIKU

ABORIGINAL CULTURAL DESTINATION
PORT ADELAIDE

PLACE ACTIVATION

EXPRESSION OF INTEREST

Puki Puki tampi'dlu, nartangka wapi'dlu, marnintyaria tarrkarri tai'dlu

Welcome. Let us recognise the past, act in the present and build a better future.

At the City of PAE, we have been working closely with local Kaurna Custodians and the PAE Aboriginal Advisory Panel to create Yitpi Yartapuultiku — a new Aboriginal Cultural destination in Port Adelaide.

We are currently seeking Expressions of Interest from anyone wanting to collaborate with us to deliver programs and activities that will bring Yitpi Yartapuultiku to life as a space where people can meet, learn, experience, grow and develop strong cultural connections. Whether you are an individual, community group or organisation, if you have an idea for a program, event, project, workshop or other activity, we would like to hear from you.

How To Become a Part of Yitpi Yartapuultiku

Yitpi Yartapuultiku will be a space where people can connect and establish a unique cultural connection within our local community. It will offer and facilitate a range of services and programs. We welcome Expressions of Interest from individuals and groups for activities, projects and events that encourage people from all backgrounds to share, learn and experience our rich heritage and foster a sense of belonging. Some examples of possible projects that you might propose include:

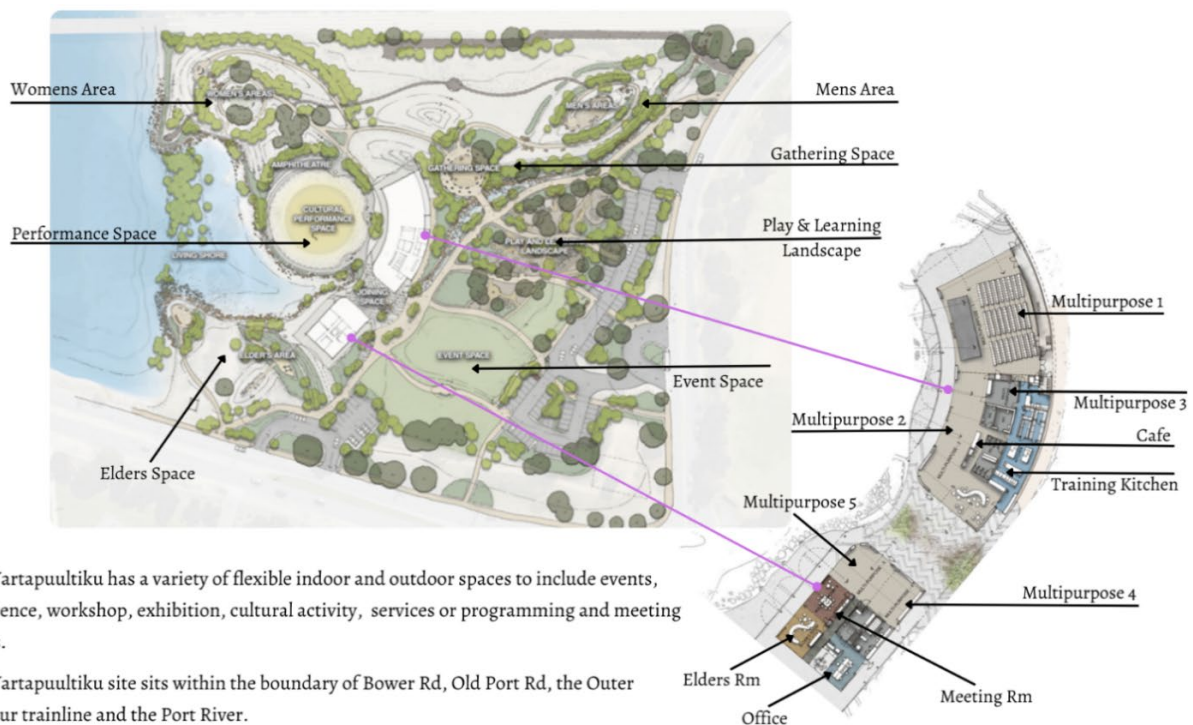
- Festivals
- Live performances and music
- Open studio sessions
- Celebrations of cultural and creative artistic experiences
- Visual arts and digital media
- Cultural events, ceremonies and rituals
- Cultural information services
- Special-interest collections and exhibits
- Display of books, recordings and artefacts
- Exhibitions
- School programs and services
- Talks about art and culture
- Film showings
- Educational activities
- Special-interest activities
- Tours
- Food events
- Social gatherings
- Catering
- Training RTO — food services, horticulture, tourism, arts
- Cafe business
- Retail offering and online store

- Gallery or curatorial services
- Business incubator
- Camp programs
- Citizen Science projects — e.g. land conservation, re-wilding, river ecology

Imagining Yitpi Yartapuultiku

The indoor and outdoor spaces within Yitpi Yartapuultiku will offer a wealth of opportunities for activities and programs where people can experience, learn about and immerse themselves in culture through:

- Cultural languages
- Festivals
- Rituals and ceremonial pastimes
- Food
- Architecture
- Educational sessions
- The ecology of the coastal and river environment
- Performances
- Exhibitions of contemporary art
- Historical artefacts
- An opportunity to develop a sense of cultural identity
- The chance to wander, explore, interact and connect with Yitpi Yartapuultiku



Working Together

At Yitpi Yartapuultiku, we will invest in and embrace collaborations and partnerships with the Kaurna, Aboriginal and broader community, including cultural service providers, businesses and community organisations. We aim to collaboratively implement three planning approaches — Council Led, co-led and community-led outcomes that will:

- Build a supportive scaffolding of community assets, resources and creative capacity for cultural experiences and participation that support and strengthen the cultural life of our community
- Grow and develop a shared understanding of our unique heritage and cultural identity, along with a commitment to protecting our cultural spaces, and share and celebrate this with our community and visitors
- Build upon our City's reputation of creativity and innovation in our arts and cultural industry and contribute to our regional economy

Project Principles

We are looking for Expressions of Interest for projects or ideas that:

- Maintain the Yitpi Yartapuultiku vision: to welcome all people to a safe place; be a place to practise, share, celebrate and record past, present and emerging; be a place for Aboriginal and non-Aboriginal people to learn, experience and be immersed together in culture; and be a place for all to connect to Country
- Recognise and respect cultural authority and cultural authenticity
- Sustain equitable access to Country and culture
- Uncover community values and expertise
- Secure Council-led, co-led and community-led outcomes
- Use collaboration and partnership to build a space that is vibrant and thriving
- Demonstrate innovation and/or test and refine concepts
- Build our capacity to drive place-based community development
- Secure Yitpi Yartapuultiku as an authentic and unique brand, place and space
- Help to enhance people's wellbeing and create a positive impact
- Provide local, regional, interstate and international visitors with an opportunity to have an unforgettable, authentic, cultural experience

Positioning Your Expression of Interest

Your project or idea should fit the aims of one or more of the activation streams listed below.

Activation Stream	Aim
Cultural Development	To develop the capacity to offer an interactive and intergenerational exchange of Aboriginal culture
Cultural Products and Services	To present opportunities for cultural practitioners to offer cultural products and services for a range of customers
Visual and Creative Arts	To provide a program of visual and performing arts with a focus on cultural expression
Venue and Space	To offer the opportunity for people to hire quality spaces for a meeting, conference, event and gathering
Economic Development	To implement programs that offer training and skills development and facilitate economic empowerment of Aboriginal people

When you submit an Expression of Interest, the Yitpi Yartapuultiku team can also help you establish any requirements and clarify the activation aims.

What is the Time Frame?

We are looking for Expressions of Interest from individuals, groups and organisations who would like to collaborate and deliver a service or program at Yitpi Yartapuultiku from early 2025. There will be several Expression of Interest rounds.

How to Submit Your Expression of Interest

We are currently accepting submissions for Round 1. Closes 30 March 2024

Your submission should include the following:

- A proposal of your services and/or program
- Recent examples of your services and/or program
- An overview of delivery skills and program/service experience relevant to your proposal
- A brief summary of your interest in, and approach to, collaborating in the Yitpi Yartapuultiku Project

In your submission, you should also demonstrate an understanding of:

- The social, cultural, economic and community benefits that your service or program will bring to Yitpi Yartapuultiku and the broader community
- The space and technical medium that you intend to use or that you will require for your service or program

Please also provide your contact details in your submission, including:

- Your name
- Your phone number
- Your email address
- Your postal address

Please submit your Expression of Interest to:

Rodney Welch, Place Leader, Yitpi Yartapuultiku

- Email: rodney.welch@cityofpae.sa.gov.au
- Post: City of PAE, PO Box 110, Port Adelaide SA 5015

If You Need More Information or Assistance

If you have more questions about Yitpi Yartapuultiku or about how to submit an Expression of Interest, please feel free to visit the Yitpi Yartapuultiku project page on Participate PAE, our online engagement platform, at: participate.cityofpae.sa.gov.au/yitpiyartapuultiku

Alternatively, please feel free to contact:

- Rodney Welch, Place Leader, rodney.welch@cityofpae.sa.gov.au
- Matthew Rose, Project Lead, matthew.rose@cityofpae.sa.gov.au